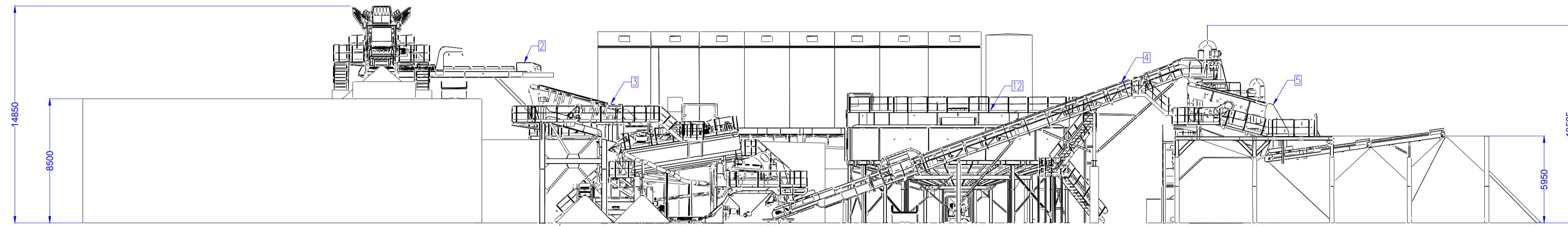


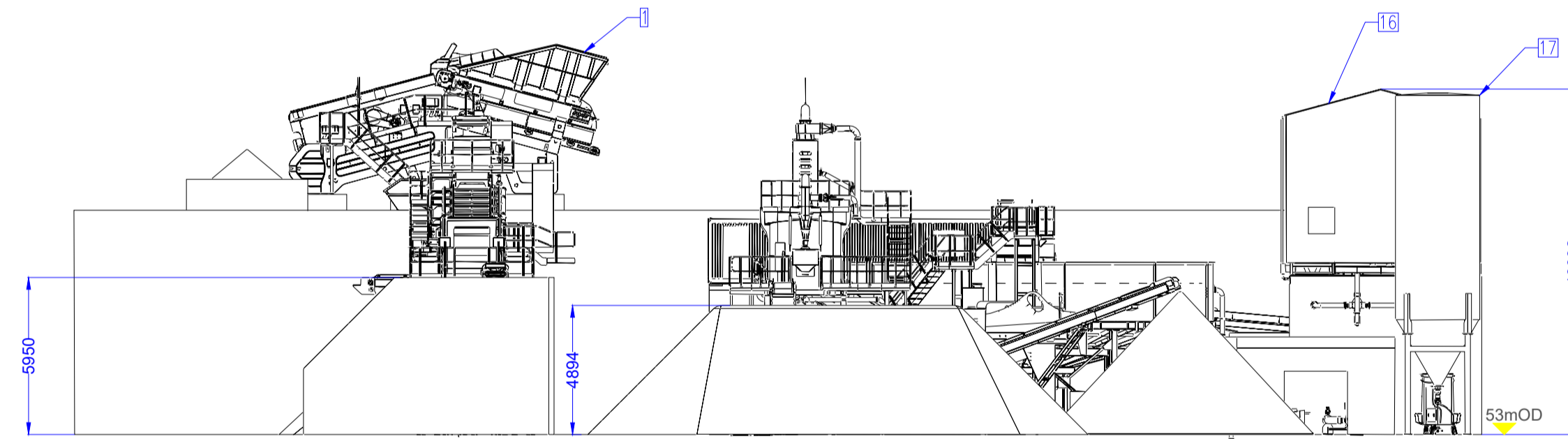
Notes:

1. REFER TO DRAWING PL05 FOR LOCATION OF SOIL WASH PLANT.
2. FOR PLANNING PURPOSES ONLY. DRAWING PROVIDED TO SLR CONSULTING BY CDE - DWG REF. SL8236-T3-L1.
3. ALL DIMENSIONS ARE IN mm.

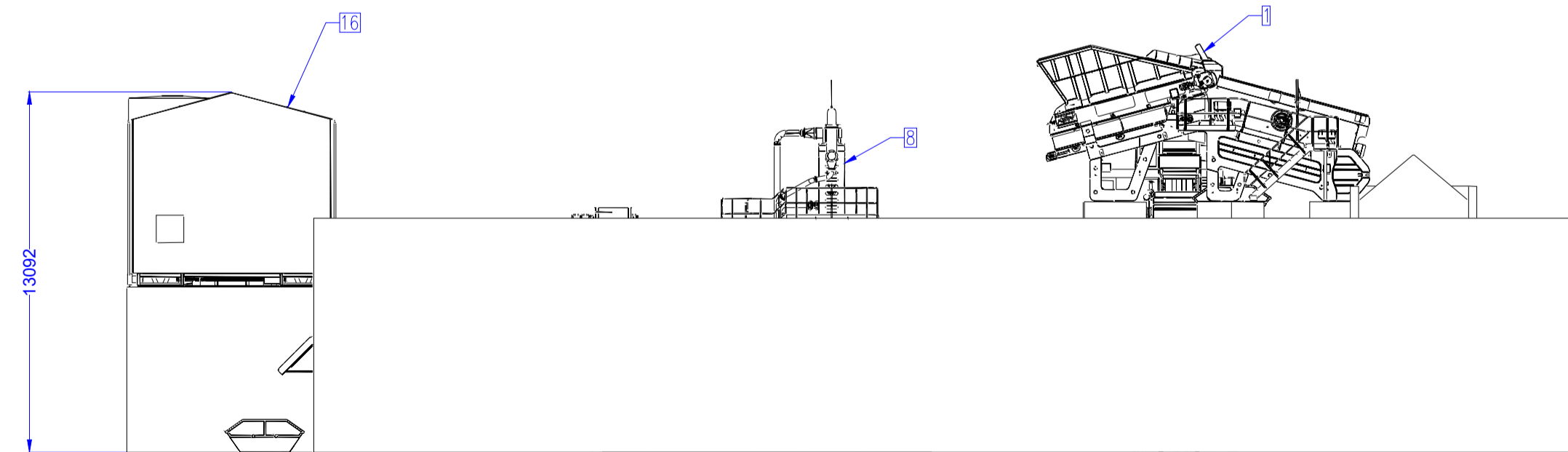
Item	Qty	Plant Item
1	1	R4500 APRON FEEDER
2	1	M1210 FEED CONVEYOR
2A	1	CORE 1000E OVERBAND MAGNET
3	1	AGOMAX 251SR
4	1	S2908 PROGRADE FEED CONVEYOR
4A	1	CORE 800E OVERBAND MAGNET
5	1	P3-75 DRY SIZING SCREEN
6	1	M0565 AGG STOCKPILE CONVEYOR
7	1	M1065 AGG STOCKPILE CONVEYOR
8	1	SFCU 200
9	1	R1765 SAND STOCKPILE CONVEYOR
10	1	M1765 SAND STOCKPILE CONVEYOR
11	1	ORGANICS SCREEN
12	1	A1500 AQUACYCLE
13	1	800M3 CONCRETE BUFFER TANK
13A	1	CDE 200/55/38
14	1	800M3 CONCRETE WATER TANK
15	1	4 PANEL SCREEN W/ ANTIPED.
16	1	CDE 2000 P19 PRESS 246
17	1	LIME DOSING PLANT
18	1	12M CONTROL CABIN
19	1	60M3 CONCRETE CLOTH WASH TANK



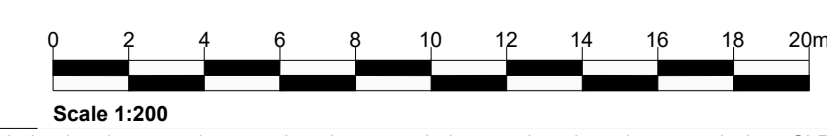
VIEW A-A



VIEW B-B



VIEW C-C



Rev	Amendments	Date	By	Chk	Auth



Drawing Status & Suitability Code **FINAL**

Client
KILSARAN CONCRETE
 Ballinclare Quarry, Kilbride, Co. Wicklow

Project
PLANNING APPLICATION
 Materials Recovery / Recycling Facility
 and Inert Landfill

Drawing Title
PROPOSED SOIL WASH PLANT ELEVATIONS

Scale 1:200	@ A1	SLR Project No. 065366.00001
Designed EW	Drawn EW	Checked DL
Date 10/24	Date 10/24	Date 10/24
Drawing Number DRAWING PL12		Rev 0

07/11/2024
 \\slr-local\au\Office\IEDublin\SLR DATA\SLR Projects\0038 Kilsaran Concrete\065366 Ballinclare Materials Mgmt Facility\Planning\Dwg\CAD\Wkg\065366_00001_0.DWG PL 12 Soil Washing Plant Elevations.dwg